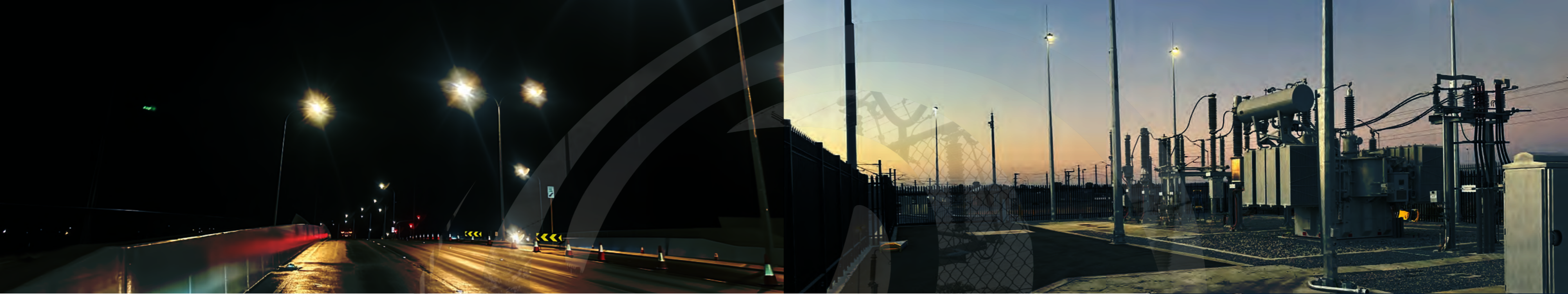


CAPABILITIES AND SERVICES

EXCELLENCE
PEOPLE-CENTRIC
SOLUTION-DRIVEN





Company Overview

FORSA has firmly established itself as a leading electrical contractor, delivering exceptional infrastructure solutions across diverse sectors. Whether powering up urban substations or illuminating community parks, FORSA brings an unrivaled level of expertise and precision to every project we undertake.

Our core specialties include the construction and commissioning of substations, installation of sophisticated lighting systems, solar panel installations, and comprehensive earthing & bonding solutions. With a proven track record in substation development and electrical works, FORSA excels in providing reliable power distribution systems. We have enhanced infrastructure projects and local parks with expertly designed lighting systems, ensuring every detail is addressed to provide comprehensive illumination solutions.

From high-voltage substations to complex earthing grids, FORSA's experienced team of engineers, supervisors, and field experts ensures seamless, safe, and efficient project delivery. Our team not only installs electrical systems but also sets the foundation for success with meticulous attention to detail and a commitment to excellence in every aspect of the project.

FORSA is more than just about building electrical systems; we are committed to creating lasting impacts that light up the future. Whether it's substation projects or solar energy solutions, our mission is clear: to power communities with innovative, sustainable, and enduring electrical infrastructure.

Mission Statement

At FORSA, our mission is to drive innovation and sustainability in the electrical and energy sectors by providing cutting-edge solutions that empower communities and industries. We leverage our expertise in substation construction, lighting systems, solar installations, and earthing solutions to lead the charge in renewable energy and smart grid technologies.

We are dedicated to integrating advanced energy solutions, including energy storage and EV charging infrastructure, to foster a sustainable and efficient future. Through a commitment to excellence, safety, and continuous improvement, we aim to deliver resilient energy infrastructure that adapts to the evolving needs of our clients.

Our Vision

"To be a leader in sustainable infrastructure and energy solutions, empowering communities and businesses to thrive through our diverse offerings in civil construction, earthworks, and renewable energy."

Together, we are shaping a brighter, cleaner, and more energy-secure tomorrow.



FORSA Core Values



EXCELLENCE

Striving for the highest standards in everything we do. Excellence encompasses integrity, accountability, and a strong work ethic, ensuring we consistently deliver quality and take responsibility for our actions.

1



PEOPLE-CENTRIC

We prioritise the well-being of our people, by fostering a supportive and inclusive environment that values physical, emotional, and mental health. Through respect, teamwork, and collaboration, we embrace diversity and promote open discussions where every voice is heard. We are committed to work-life balance and flexibility for personal needs, ensuring every team member feels valued and empowered to grow both personally and professionally. This commitment extends to our clients and partners, ensuring strong, respectful relationships that drive mutual success and satisfaction across our diverse business ecosystem.

2



SOLUTIONS-DRIVEN

We take the initiative, tackling challenges head-on. Being solutions-driven means embracing problem-solving, showing resilience, and continuously learning. It's about discovering new paths, growing with each experience, and creating opportunities where others see obstacles. We don't just react to problems – we turn them into progress.

3

Core Capabilities

- » Construction and commissioning of high-voltage substations, including full integration of power equipment, protection systems, and control infrastructure.
- » Full installation of street lighting on freeways, highways and residential developments
- » Excavation of cable, pit & pipe trenches
- » BESS Installation
- » Electrical service connections, including ground works, cabling terminating and testing
- » Maintenance and repairs to civil & electrical infrastructure
- » Installation of earthing systems ranging minor to major
- » Ground and above ground earthing works.
- » Underground pit and pipe installations
- » New civil, facility infrastructure or building electrical installations
- » Trenching for all critical services
- » Reinstatement of ground works
- » Shutdowns & mine site maintenance



Beckenham Traction Power Upgrade 2024

Client: NEWest Alliance

FORSA were recently awarded a second substation upgrade from our repeat client, NEWest Alliance.

Scope of Works:

132kV & 25kV Substation Bay:

- » Installation of all 132kV and 25kV equipment, including Voltage Transformers (VTs) and VT marshalling boxes.
- » Installation of 132kV and 25kV aerials, from cable sealing ends to the 25kV disconnecter.
- » Erection of lighting and lightning masts, complete with lighting fixtures and power outlets.
- » Installation and termination of MV, protection, control, and LV cables as per the project's cable schedules.
- » Supply and installation of necessary glands, shrouds, and materials to complete all cable terminations.
- » Installation of the earth grid, including earth rods, risers, and primary plant earthing.

Feeder Station Building:

- » Construction and installation of the feeder station building.
- » Installation of small power and lighting systems in the basement.
- » Installation of cable ladders in the feeder station basement as per design requirements.

- » Termination of MV, protection, control, and LV cables.
- » Supply and installation of all materials needed for cable terminations, including glands and shrouds.
- » Installation of all earthing components, including the earth grid, rods, risers, and fence earthing.
- » Installation of the site main switchboard and connections to the Western Power supply transformer.
- » Installation of the site isolation transformer, connecting it to the main switchboard and feeder station.

Feeder & Return Current Cabling to OLE (Rail Corridor):

Installation of feeder and return cables from the 25kV switchgear and return current cubicle to the OLE isolators and trackside return earth bars (TREBs), including terminations.

Trackside Return Earth Bars (TREB) Installation:

Supply and installation of TREBs in the rail corridor.

Ranford Road PSP Street Lighting & Electrical 2024

Client: NEWest Alliance

FORSA is proud to be part of the exciting new Ranford Road train station development for Newest Alliance and Main Roads WA. We're delivering a comprehensive lighting solution to enhance safety and user experience.

- » Installation of street & bridge underpass lighting: scope involves the supply, installation and commissioning of 20 light poles, mounted on reinforced concrete pile footings.

- » Sustainable car park lighting: scope involves the supply, installation and commissioning of 11 state-of-the-art MOMA solar lights. This innovative solution provides ample illumination while minimising environmental impact through renewable energy.
- » Distribution board: scope involves the manufacture, supply and installation of MRWA approved site main switch board and lighting control panel.





Nowergup Traction Power Upgrade 2023 -2024

Client: NEWest Alliance

FORSA was awarded the civil and electrical package to upgrade Nowergup substation. The package involved transforming the power station from single-transformer configuration to a two-transformer setup, to cater to the demands of the new 14-kilometer dual-track railway extension from Butler station to three new stations culminating at Yanchep station. The scope of works included:

132kV & 25kV Substation Bay:

- » Installation of all 132kV and 25kV equipment, including voltage transformers (VTs) and VT marshalling boxes.
- » Installation of 132kV and 25kV aerials, from cable sealing ends to the 25kV disconnecter.
- » Erection of lighting and lightning masts, complete with lighting fixtures and power outlets.
- » Installation and termination of MV, protection, control, and LV cables as per the project's cable schedules.
- » Supply and installation of necessary glands, shrouds, and materials to complete all cable terminations.
- » Installation of the earth grid, including earth rods, risers, and primary plant earthing.

Feeder Station Building:

- » Installation of small power and lighting systems in the basement.



- » Installation of cable ladders in the feeder station basement as per design requirements.
- » Termination of MV, protection, control, and LV cables.
- » Supply and installation of all materials needed for cable terminations, including glands and shrouds.
- » Installation of all earthing components, including the earth grid, rods, risers, and fence earthing.
- » Installation of the site main switchboard and connections to the Western Power supply transformer.
- » Installation of the site isolation transformer, connecting it to the main switchboard and feeder station.

Feeder & Return Current Cabling to OLE (Rail Corridor):

Installation of feeder and return cables from the 25kV switchgear and return current cubicle to the OLE isolators and trackside return earth bars (TREBs), including terminations.

Splendid Park – Installation & Commissioning of Floodlighting 2023 - 2024

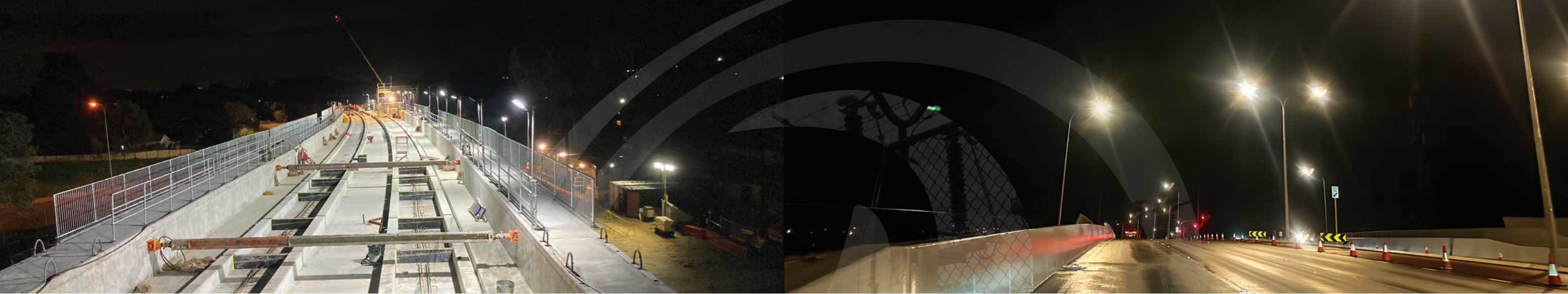
Client: Wanneroo Council

This project has been funded under the Australian Government's Local Roads & Community Infrastructure Program – Phase 3.

The Splendid Park upgrade floodlighting project was made possible through \$420,000 funding from the Australian Government through the Local Roads and Community Infrastructure Program.

FORSA was awarded a Contract for the installation & commissioning of floodlighting at Splendid Park in Yanchep. The works involved removing the old floodlighting system and installing 8 new flood lights and switch board.





Temporary Lighting Byford Rail Extension 2024

Client: Laing O'Rourke

FORSA has been awarded a temporary lighting package to enhance visibility for night shift crews working on the Byford Rail Extension project.

This crucial initiative will ensure that the team can execute their tasks safely and efficiently during nighttime operations - minimising delays and maximising productivity.

By providing adequate illumination, FORSA is playing a vital role in supporting the timely progression of this iconic infrastructure project, ultimately contributing to the successful delivery of enhanced rail services for the community

FORSA's Safety Commitment

SAFETY Commitment

Prioritising the health, safety, and well-being of our employees, contractors, and the communities we serve is not merely a responsibility; it's a fundamental commitment that influences every decision we undertake.

Our Approach

Our safety approach is inclusive and promotes a shared sense of responsibility, empowering everyone to play a role in creating a safe and secure environment.

FORSA's safety practices are founded on a robust Health and Safety Management System. This system complies with all relevant regulations, standards, and industry best practices, supported by our certification in ISO 45001:2018 Occupational Health & Safety Management System.

SAFE Fundamentals

Our SAFE Fundamentals presents a clear and direct strategy for managing the critical risks that are most pertinent to FORSA operations.

Built on years of operational experience and industry expertise, this strategic framework offers specific guidelines for effectively handling high-risk activities, fostering a safer and more secure working environment for all stakeholders.

SAFE Talk

We are committed to fostering a healthier workplace that supports employee well-being. We have endorsed the Construction Industry Blueprint for Better Mental Health and Suicide Prevention, striving to create an environment where employees can openly discuss mental health and well-being.

We actively support MATES in Construction and recognise their vital work in our industry. Our collaboration with MATES aims to drive lasting change within the sector by educating our team on mental health best practices, strengthening resilience, and connecting our workforce to necessary support networks when required.

SAFE Together

Our SAFE Together culture sets standards for excellence across FORSA operations. SAFE Together fosters a collective sense of responsibility for preventing adverse outcomes and a common expression of regard about safety. This inclusive approach extends to every individual within FORSA, including our dedicated employees and valued contractors.



FORSA

Office: Level 1, 677 Murray Street,
West Perth 6005

Mailing Address: PO Box 1016,
West Perth, WA 6872

Phone: +61 (08) 9356 7048
Electrical licence No. EC15056

www.forsa.com.au

